

PLASTIC BILE DUCT STENTS

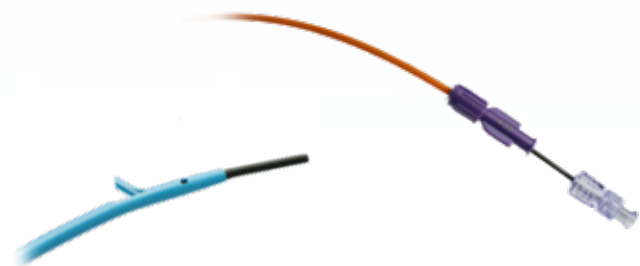
MAXIMUM DRAINAGE, MAXIMUM HOLD

MICRO-TECH offers a comprehensive range of plastic stents for short and medium-term drainage in the bile duct. The stents are available in different shapes, lengths and diameters. Thus, the ideal stent is available for each indication. The high-quality PE-/PTFE-material of the stents ensures reliable drainage and adapts optimally

to the anatomy of the patient. Flaps at the ends of the stents also ensure a secure hold with minimal migration. For rapid and safe implantation, the stents are available both individually and on pre-loaded systems. In addition, MICRO-TECH also offers introduction-systems in all relevant sizes.

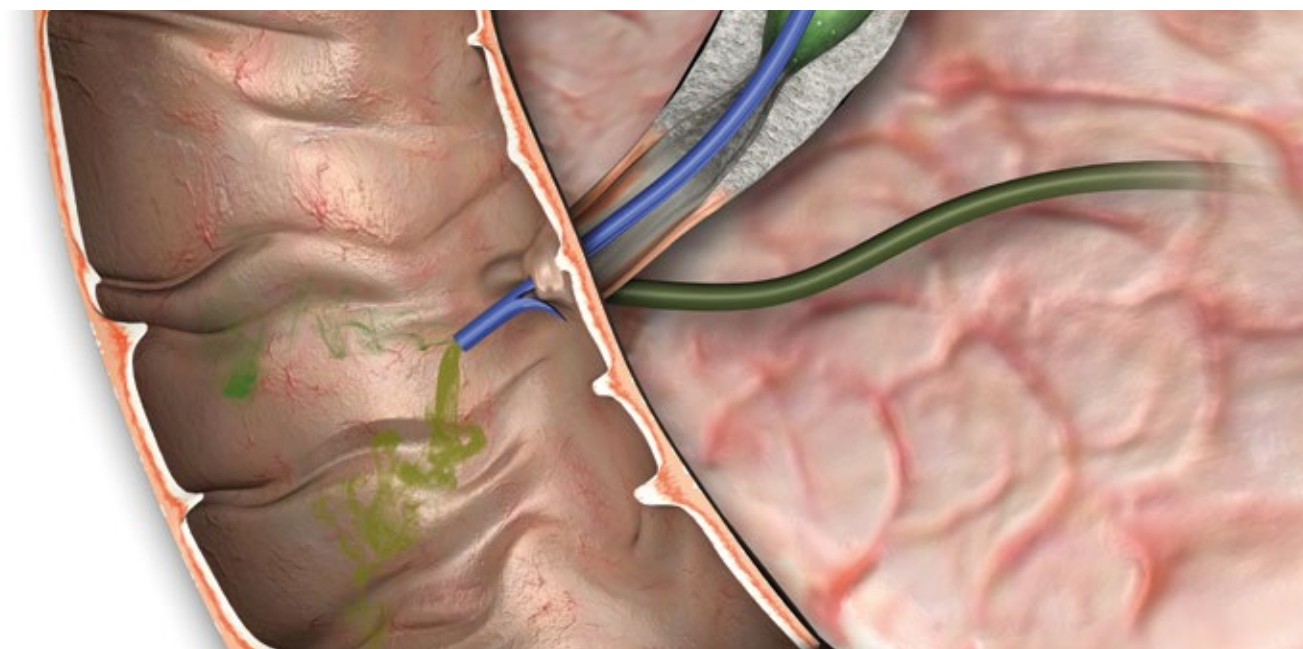
SPECIFIC CHARACTERISTICS

- Different shapes: straight, curved, angled, pigtail, double-pigtail and christmas tree
- Optimum flow rate
- Ideal adaptation to anatomy
- Safe hold, minimal migration
- Available single-packed or pre-loaded on introduction-system
- High x-ray visibility



Pre-loaded stent

System handle



SPECIFICATIONS

STENT STRAIGHT



- Shape: straight
- 2 flaps
- 2 side-holes
- X-ray visible
- Material: PE

Working length	Diameter bile duct prosthesis			
	7FR	8.5FR	10FR	11.5FR
5 cm	BPDS-31114-0705	BPDS-31114-0805	BPDS-31114-1005	BPDS-31114-1105
6 cm	BPDS-31114-0706	BPDS-31114-0806	BPDS-31114-1006	BPDS-31114-1106
7 cm	BPDS-31114-0707	BPDS-31114-0807	BPDS-31114-1007	BPDS-31114-1107
8 cm	BPDS-31114-0708	BPDS-31114-0808	BPDS-31114-1008	BPDS-31114-1108
9 cm	BPDS-31114-0709	BPDS-31114-0809	BPDS-31114-1009	BPDS-31114-1109
10 cm	BPDS-31114-0710	BPDS-31114-0810	BPDS-31114-1010	BPDS-31114-1110
11 cm	BPDS-31114-0711	BPDS-31114-0811	BPDS-31114-1011	BPDS-31114-1111
12 cm	BPDS-31114-0712	BPDS-31114-0812	BPDS-31114-1012	BPDS-31114-1112
13 cm	BPDS-31114-0713	BPDS-31114-0813	BPDS-31114-1013	BPDS-31114-1113
14 cm	BPDS-31114-0714	BPDS-31114-0814	BPDS-31114-1014	BPDS-31114-1114
15 cm	BPDS-31114-0715	BPDS-31114-0815	BPDS-31114-1015	BPDS-31114-1115

SPECIFICATIONS

STENT CURVED



- Shape: 15° curved
- 2 flaps
- 2 side-holes
- X-ray visible
- Material: PE

Working length	Diameter bile duct prosthesis			
	7FR	8.5FR	10FR	11.5FR
5 cm	BPDS-32114-0705	BPDS-32114-0805	BPDS-32114-1005	BPDS-32114-1105
6 cm	BPDS-32114-0706	BPDS-32114-0806	BPDS-32114-1006	BPDS-32114-1106
7 cm	BPDS-32114-0707	BPDS-32114-0807	BPDS-32114-1007	BPDS-32114-1107
8 cm	BPDS-32114-0708	BPDS-32114-0808	BPDS-32114-1008	BPDS-32114-1108
9 cm	BPDS-32114-0709	BPDS-32114-0809	BPDS-32114-1009	BPDS-32114-1109
10 cm	BPDS-32114-0710	BPDS-32114-0810	BPDS-32114-1010	BPDS-32114-1110
11 cm	BPDS-32114-0711	BPDS-32114-0811	BPDS-32114-1011	BPDS-32114-1111
12 cm	BPDS-32114-0712	BPDS-32114-0812	BPDS-32114-1012	BPDS-32114-1112
13 cm	BPDS-32114-0713	BPDS-32114-0813	BPDS-32114-1013	BPDS-32114-1113
14 cm	BPDS-32114-0714	BPDS-32114-0814	BPDS-32114-1014	BPDS-32114-1114
15 cm	BPDS-32114-0715	BPDS-32114-0815	BPDS-32114-1015	BPDS-32114-1115

SPECIFICATIONS

STENT LATERAL ANGLED



- Form: 45° lateral angled
- 2 flaps
- 2 side-holes
- X-ray visible
- Material: PE

Working length	Diameter bile duct prosthesis			
	7FR	8.5FR	10FR	11.5FR
5 cm	BPDS-33114-0705	BPDS-33114-0805	BPDS-33114-1005	BPDS-33114-1105
6 cm	BPDS-33114-0706	BPDS-33114-0806	BPDS-33114-1006	BPDS-33114-1106
7 cm	BPDS-33114-0707	BPDS-33114-0807	BPDS-33114-1007	BPDS-33114-1107
8 cm	BPDS-33114-0708	BPDS-33114-0808	BPDS-33114-1008	BPDS-33114-1108
9 cm	BPDS-33114-0709	BPDS-33114-0809	BPDS-33114-1009	BPDS-33114-1109
10 cm	BPDS-33114-0710	BPDS-33114-0810	BPDS-33114-1010	BPDS-33114-1110
11 cm	BPDS-33114-0711	BPDS-33114-0811	BPDS-33114-1011	BPDS-33114-1111
12 cm	BPDS-33114-0712	BPDS-33114-0812	BPDS-33114-1012	BPDS-33114-1112
13 cm	BPDS-33114-0713	BPDS-33114-0813	BPDS-33114-1013	BPDS-33114-1113
14 cm	BPDS-33114-0714	BPDS-33114-0814	BPDS-33114-1014	BPDS-33114-1114
15 cm	BPDS-33114-0715	BPDS-33114-0815	BPDS-33114-1015	BPDS-33114-1115

SPECIFICATIONS

STENT CENTRAL ANGLED



- Shape: 90° central angled
- 2 flaps
- 2 side-holes
- X-ray visible
- Material: PE

Working length	Diameter bile duct prosthesis			
	7FR	8.5FR	10FR	11.5FR
5 cm	BPDS-34114-0705	BPDS-34114-0805	BPDS-34114-1005	BPDS-34114-1105
6 cm	BPDS-34114-0706	BPDS-34114-0806	BPDS-34114-1006	BPDS-34114-1106
7 cm	BPDS-34114-0707	BPDS-34114-0807	BPDS-34114-1007	BPDS-34114-1107
8 cm	BPDS-34114-0708	BPDS-34114-0808	BPDS-34114-1008	BPDS-34114-1108
9 cm	BPDS-34114-0709	BPDS-34114-0809	BPDS-34114-1009	BPDS-34114-1109
10 cm	BPDS-34114-0710	BPDS-34114-0810	BPDS-34114-1010	BPDS-34114-1110
11 cm	BPDS-34114-0711	BPDS-34114-0811	BPDS-34114-1011	BPDS-34114-1111
12 cm	BPDS-34114-0712	BPDS-34114-0812	BPDS-34114-1012	BPDS-34114-1112
13 cm	BPDS-34114-0713	BPDS-34114-0813	BPDS-34114-1013	BPDS-34114-1113
14 cm	BPDS-34114-0714	BPDS-34114-0814	BPDS-34114-1014	BPDS-34114-1114
15 cm	BPDS-34114-0715	BPDS-34114-0815	BPDS-34114-1015	BPDS-34114-1115

SPECIFICATIONS

PIGTAIL DOUBLE



- Shape: Pigtail
- Double
- 2 side-holes
- X-ray visible
- Material: PE

Working length	Diameter bile duct prosthesis			
	7FR	8.5FR	10FR	11.5FR
5 cm	BPDS-31993-0705	BPDS-31993-0805	BPDS-31993-1005	BPDS-31993-1105
6 cm	BPDS-31993-0706	BPDS-31993-0806	BPDS-31993-1006	BPDS-31993-1106
7 cm	BPDS-31993-0707	BPDS-31993-0807	BPDS-31993-1007	BPDS-31993-1107
8 cm	BPDS-31993-0708	BPDS-31993-0808	BPDS-31993-1008	BPDS-31993-1108
9 cm	BPDS-31993-0709	BPDS-31993-0809	BPDS-31993-1009	BPDS-31993-1109
10 cm	BPDS-31993-0710	BPDS-31993-0810	BPDS-31993-1010	BPDS-31993-1110
11 cm	BPDS-31993-0711	BPDS-31993-0811	BPDS-31993-1011	BPDS-31993-1111
12 cm	BPDS-31993-0712	BPDS-31993-0812	BPDS-31993-1012	BPDS-31993-1112
13 cm	BPDS-31993-0713	BPDS-31993-0813	BPDS-31993-1013	BPDS-31993-1113
14 cm	BPDS-31993-0714	BPDS-31993-0814	BPDS-31993-1014	BPDS-31993-1114
15 cm	BPDS-31993-0715	BPDS-31993-0815	BPDS-31993-1015	BPDS-31993-1115

SPECIFICATIONS

PIGTAIL DISTAL



- Shape: Pigtail
- Distal
- 2 side-holes
- X-ray visible
- Material: PE

Working length	Diameter bile duct prosthesis	
	8.5FR	10FR
5 cm	BPDS-31196-0805	BPDS-31196-1005
6 cm	BPDS-31196-0806	BPDS-31196-1006
7 cm	BPDS-31196-0807	BPDS-31196-1007
8 cm	BPDS-31196-0808	BPDS-31196-1008
9 cm	BPDS-31196-0809	BPDS-31196-1009
10 cm	BPDS-31196-0810	BPDS-31196-1010
11 cm	BPDS-31196-0811	BPDS-31196-1011
12 cm	BPDS-31196-0812	BPDS-31196-1012
13 cm	BPDS-31196-0813	BPDS-31196-1013
14 cm	BPDS-31196-0814	BPDS-31196-1014
15 cm	BPDS-31196-0815	BPDS-31196-1015

SPECIFICATIONS

PIGTAIL PROXIMAL



- Shape: Pigtail
- Proximal
- 2 side-holes
- X-ray visible
- Material: PE

Working length	Diameter bile duct prosthesis	
	8.5FR	10FR
5 cm	BPDS-31916-0805	BPDS-31916-1005
6 cm	BPDS-31916-0806	BPDS-31916-1006
7 cm	BPDS-31916-0807	BPDS-31916-1007
8 cm	BPDS-31916-0808	BPDS-31916-1008
9 cm	BPDS-31916-0809	BPDS-31916-1009
10 cm	BPDS-31916-0810	BPDS-31916-1010
11 cm	BPDS-31916-0811	BPDS-31916-1011
12 cm	BPDS-31916-0812	BPDS-31916-1012
13 cm	BPDS-31916-0813	BPDS-31916-1013
14 cm	BPDS-31916-0814	BPDS-31916-1014
15 cm	BPDS-31916-0815	BPDS-31916-1015

SPECIFICATIONS

CHRISTMAS TREE



- Shape: Christmas Tree
- 4 flaps per end
- 2 side-holes
- X-ray visible
- Material: PTFE

Working length	Diameter bile duct prosthesis	
	8.5FR	10FR
5 cm	BPDS-13442-0805	BPDS-13442-1005
6 cm	BPDS-13442-0806	BPDS-13442-1006
7 cm	BPDS-13442-0807	BPDS-13442-1007
8 cm	BPDS-13442-0808	BPDS-13442-1008
9 cm	BPDS-13442-0809	BPDS-13442-1009
10 cm	BPDS-13442-0810	BPDS-13442-1010
11 cm	BPDS-13442-0811	BPDS-13442-1011
12 cm	BPDS-13442-0812	BPDS-13442-1012
13 cm	BPDS-13442-0813	BPDS-13442-1013
14 cm	BPDS-13442-0814	BPDS-13442-1014
15 cm	BPDS-13442-0815	BPDS-13442-1015

INTRODUCER-SYSTEMS WITHOUT STENT

SPECIFICATIONS



- One step introducer-system
- X-ray visible

New: Extended guide catheter

REF	Ø catheter	Guide catheter	Introducer length
BPDI-0740/22	7 FR	40 cm	220 cm
BPDI-0840/22	8.5 FR	40 cm	220 cm
BPDI-1040/22	10 FR	40 cm	220 cm
BPDI-1140/22	11.5 FR	40 cm	220 cm

INTRODUCER-SYSTEMS WITH PRE-LOADED STENT



- One step introducer-system
- X-ray visible

SPECIFICATIONS

STENT STRAIGHT



- Shape: straight
- 2 flaps
- 2 side-holes
- X-ray visible
- Material: PE

REF	Ø catheter	Stent working/ total length	Introducer length
BPDS-31114-0805/22	8.5 FR	5 / 7 cm	220 cm
BPDS-31114-0807/22	8.5 FR	7 / 9 cm	220 cm
BPDS-31114-0809/22	8.5 FR	9 / 11 cm	220 cm
BPDS-31114-0811/22	8.5 FR	11 / 13 cm	220 cm
BPDS-31114-1005/22	10 FR	5 / 7 cm	220 cm
BPDS-31114-1007/22	10 FR	7 / 9 cm	220 cm
BPDS-31114-1009/22	10 FR	9 / 11 cm	220 cm
BPDS-31114-1011/22	10 FR	11 / 13 cm	220 cm

SPECIFICATIONS

STENT CURVED



- Shape: 15° curved
- 2 flaps
- 2 side-holes
- X-ray visible
- Material: PE

REF	Ø catheter	Stent working/ total length	Introducer length
BPDS-32114-0805/22	8.5 FR	5 / 7 cm	220 cm
BPDS-32114-0807/22	8.5 FR	7 / 9 cm	220 cm
BPDS-32114-0809/22	8.5 FR	9 / 11 cm	220 cm
BPDS-32114-0811/22	8.5 FR	11 / 13 cm	220 cm
BPDS-32114-1005/22	10 FR	5 / 7 cm	220 cm
BPDS-32114-1007/22	10 FR	7 / 9 cm	220 cm
BPDS-32114-1009/22	10 FR	9 / 11 cm	220 cm
BPDS-32114-1011/22	10 FR	11 / 13 cm	220 cm