

# CARDIA-UMBRELLA-STENT

## FOR A PERFECT HOLD IN THE CARDIA AREA

The Cardia-Umbrella-Stent by MICRO-TECH is a specially designed stent perfectly tailored to the challenging anatomical diagnosis of the cardia. Its unique design gives the stent extremely high positional stability and prevents its migration in both the gastric and oral directions. Since the lower oesophageal sphincter lies between the bulbous section and the distal end of the stent we have implemen-

ted a special feature which is an “opened umbrella” type shape to facilitate this anatomical challenge. Furthermore, the stent does not protrude into the stomach as a result of this umbrella-shaped design, ending directly behind the oesophageal gastric junction. The risk of pressure necrosis is thus significantly reduced and any potential patient discomfort is decreased.

### SPECIFIC CHARACTERISTICS

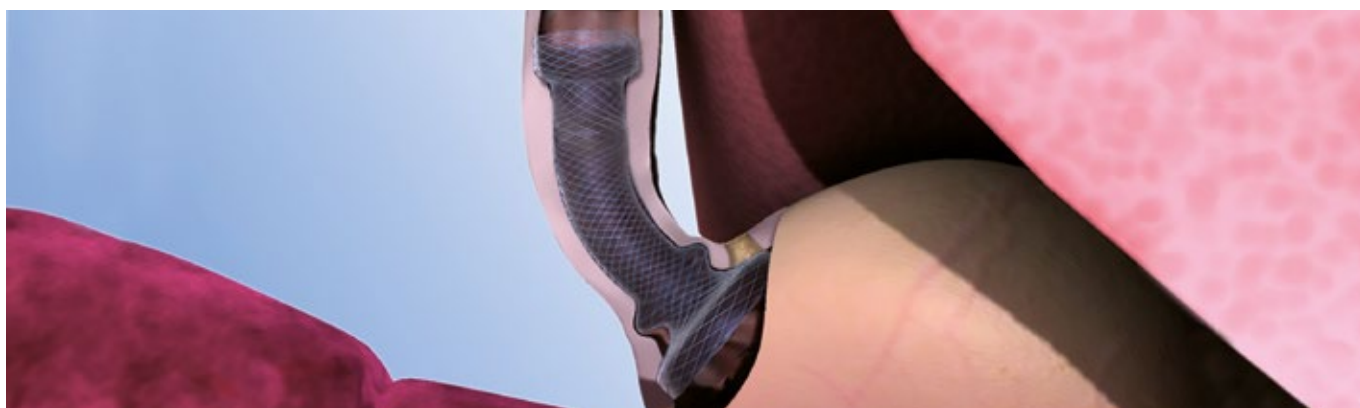
- Unique umbrella design
- Self-expanding
- Nitinol mesh with atraumatic ends
- Excellent positional stability
- High radial force
- Resistant and elastic covering
- Fully covered stents available
- High radiopacity
- Extraction threads for removal and repositioning
- Guide wire-compatible up to 0.035 inches



X-ray marking

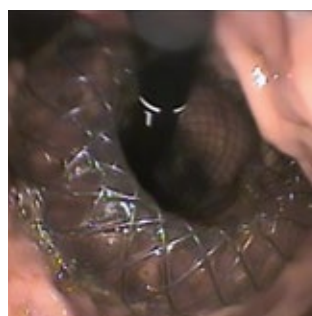


Extraction thread

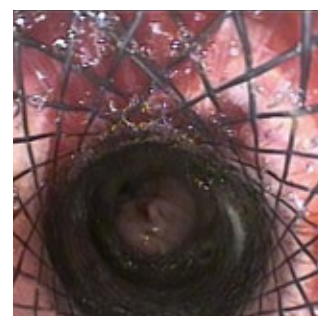


### SUCCESSFUL IN PRACTICAL USE

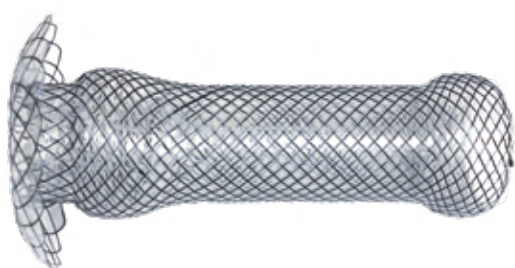
The inverse view from the stomach of the distal end of the stent shows how the umbrella end clings to the gastric mucosa directly behind the cardia without protruding into the stomach. From the perspective of the oesophagus into the stent, the bulge before the cardia and the shaping of the stent in the area of the cardia can be clearly distinguished. Both guarantee excellent positional stability for the stent.



Inverted view of the stomach showing the umbrella end



View into the released stent (oesophagus)



### KEEPS ITS PROMISES

Together with the high radial force, the spherical proximal end and the complete covering, the innovative umbrella design guarantees ideal hold in the area of the cardia. Radiopaque markers in prominent positions ease the placement of the stent under radiological view.

## SPECIFICATIONS

REF	Ø centre mm	Ø end prox./bulge/end dist. mm	Length mm	Covering mm	End design	
					Proximal	Distal
<b>STENTS WITH PARTIAL COVERING</b>						
ST01-108.24.100	24	30/30/50	100	85	Spherical	Umbrella
ST01-108.24.120	24	30/30/50	120	105	Spherical	Umbrella
<b>STENTS WITH END-TO-END COVERING</b>						
ST01-109.24.100	24	30/30/50	100	100	Spherical	Umbrella
ST01-109.24.120	24	30/30/50	120	120	Spherical	Umbrella
	Ø mm/fr.	Length mm	Guide wire	RM <sup>*1</sup>	IC <sup>*2</sup>	Lock <sup>*3</sup>
<b>INTRODUCER SYSTEM</b>						
	8.5/25	700	0.035 inch	2	Yes	Yes

Recommended guide wire: 600375-5

\*1 RM – radiopaque markings / \*2 IC – irrigation channel / \*3 Lock – secures the introducer system during storage, transportation and introduction

Also as a special size or individual stent